

PROPORTIONING Systems



ASSE 1055-1997 APPROVAL



innovation > technology > future

ProMix

easy as...



1 ... Mount the bracket and put away your tools



2 ... snap the **PROMIX** onto the bracket



3 ... insert metering tips and tubing

Time is your most valuable asset.

With ProMix, a twenty minute install now takes as little as five minutes. No more...

- Removing the screws
- Removing the cover
- Misplacing the screws
- Searching for the screws
- Realigning and replacing the cover
- Re-securing the screws you were able to find

SEKO's ProMix is an innovative system enabling fast and simple proportioning of multiple chemical applications. It's economical, reliable and user-friendly, allowing diluted chemicals to be dispensed into small and large containers.

Main features

ProMix guarantees innovation and accurate design of all mechanical parts.

- Maximum versatility and minimum inventory thanks to the modular components
- Space saving
- Quick and easy installation

For all cleaning applications, SEKO has provided the following:

- **Single or multiple chemical use**
- **Flow rate at 1, 4 or 8 GPM**
- Easy touch button and one hand lever operation
- A backflow preventing device to avoid chemical contamination to the water source
- **Outlet Tube or Bucket Mount for remote actuation (4 and 8 GPM systems only)**
- **Fill tube designed to minimize excess foam (1 GPM systems only)**

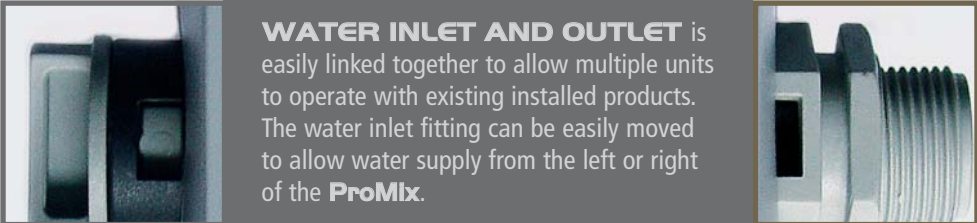
ProMix available accessories:

- Wire rack for chemical containers
- Drip Tray to avoid spillage
- Ultra lean Tip

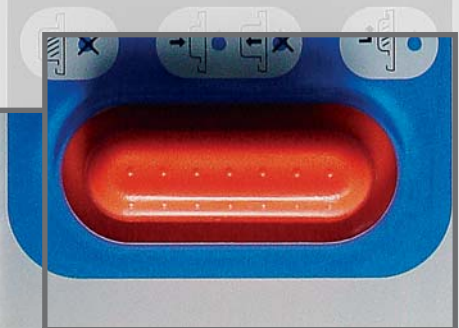
ProMix product range

Model	Activated	No. Products	Gap type	Flow rate
Promix B1F04	Button	1	F-Gap	1 GPM
Promix B1F16	Button	1	F-Gap	4 GPM
Promix B1F30	Button	1	F-Gap	8 GPM
Promix B1A04	Button	1	A-Gap	1 GPM
Promix B1A16	Button	1	A-Gap	4 GPM
Promix L1F04	Lever	1	F-Gap	1 GPM
Promix L1A04	Lever	1	A-Gap	1 GPM
Promix B4F04	Button	4	F-Gap	1 GPM
Promix B4F16	Button	4	F-Gap	4 GPM
Promix B4F30	Button	4	F-Gap	8 GPM
Promix B4A04	Button	4	A-Gap	1 GPM
Promix B4A16	Button	4	A-Gap	4 GPM
Promix L4F04	Lever	4	F-Gap	1 GPM
Promix L4A04	Lever	4	A-Gap	1 GPM





WATER INLET AND OUTLET is easily linked together to allow multiple units to operate with existing installed products. The water inlet fitting can be easily moved to allow water supply from the left or right of the **ProMix**.



LOCKING BUTTON for filling larger containers. It is possible to lock the button allowing for continuous dispensing of your diluted product



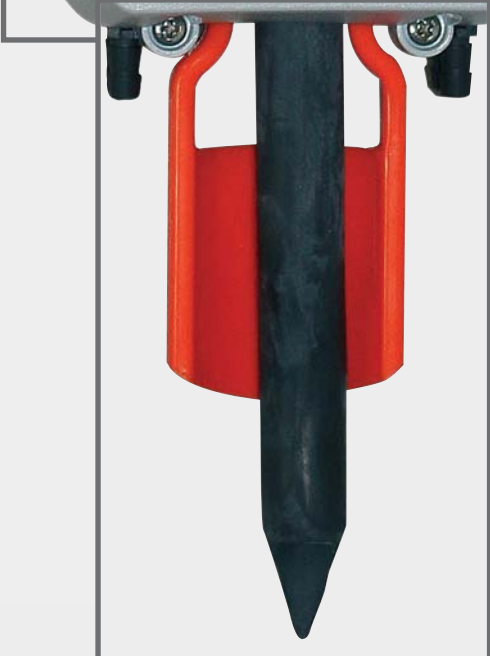
ENCLOSURE
Innovative solution

- **ProMix** system allows additional units to be easily added to an existing installation
- Easy installation thank to the **wall fixing bracket** that avoid to open the **ProMix** front cover during the installation
- The precise dilution of chemical and water can be achieved by changing the **Metering Tips**.



SELECTOR KNOB

A single system can provide up to four different chemical blends



ONE HAND BOTTLE FILLING lever actuator and **FILL TUBE** designed to minimize excess foam

ProSink

The **ProSink** is a chemical dispensing system that automatically and consistently mixes the precise amount of detergent and sanitizer with water by turning a knob, conveniently filling large sinks with accurate product solutions.

Main features

- Strong, long lasting and easy to clean rugged stainless steel enclosure
- Smooth and ergonomic surface, with no sharp edges and customisable front cover
- Connection direct to the water source, no electric power or compressed air needed
- Space saving
- Quick and easy installation: no special tools required

For all proportioning applications, SEKO provides the following:

- Ability to dose 2 different products in succession or simultaneously (2 products version)
- Single or Double chemical use
- **4 GPM Flow rate**
- **15 different mixing ratios** can be easily chosen, making the dosing accurate and effective
- Ball valve operation, no need to hold or lock a button
- An UPC backflow approved prevention device to avoid chemical contamination of the water source
- Fill tube designed to minimize excess foam
- Ultra lean Tip

ProSink available accessories:

- Wire rack for chemical containers



- Ball valve operation
- No need to hold or lock a button

- Connection direct to the water source
- No electric power or compressed air needed

- Backflow prevention system
- Protecting against cross-contamination of the water supply

- Smooth and ergonomic surface, with no sharp edges and customisable front cover
- Attractive user-friendly design

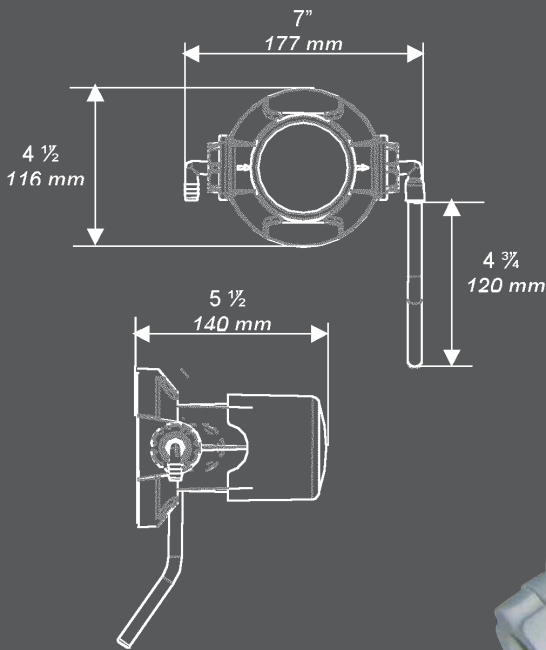
- Rugged stainless steel enclosure
- Strong, long lasting and easy to clean
- Installs easily with 2 or 3 screws



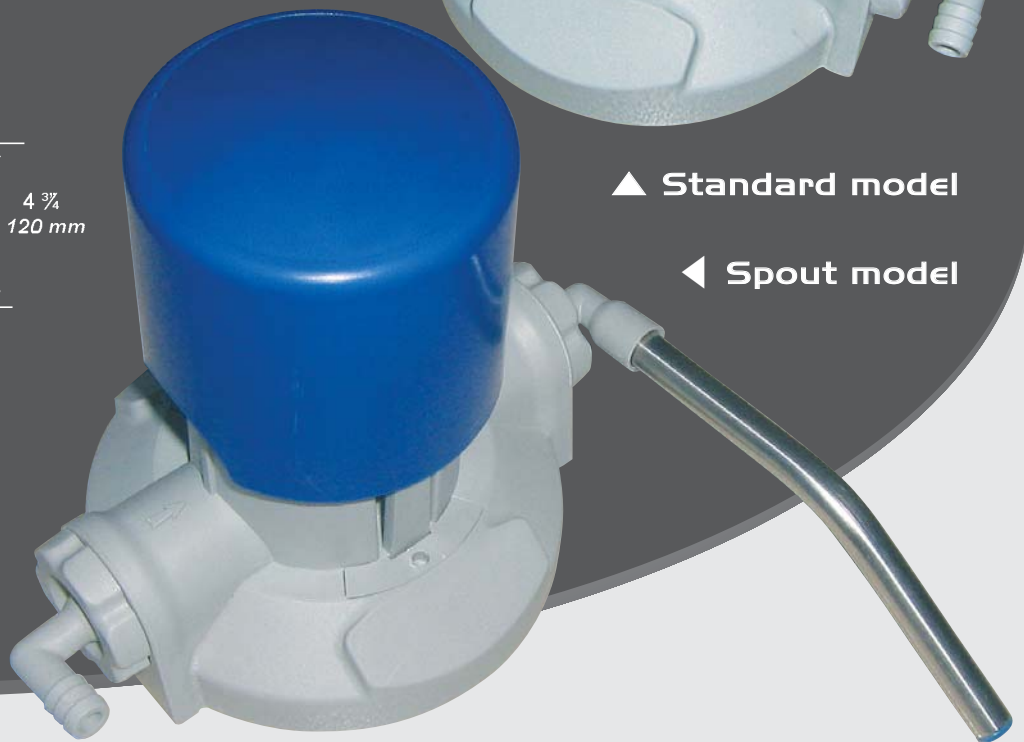
15 colour coded dilution tips

ProDose

For controlling usage of Pot and Pan, Sanitizing and most other concentrated institutional cleaning products



▲ Standard model



◀ Spout model

Fast, Easy Installation

No drill required, when replacing existing pumps, the hole patterns on the smart bracket match most existing models. Easy mounting and removing with the smart mounting bracket.

Accurate Dosing

Each push yields the same volume output every time

Adjustable Flow Rate

Internally adjustable to deliver 1/2, 3/4 or 1 ounce per push

Complete Range

Models available for detergents, solvents and chlorine products

Reliable

- Spring not in contact with liquid
- Inlet and outlet valve easily accessible for cleaning or replacing

Applications

Kitchen, Janitorial and Commercial



▲ wall mounting bracket

ProSpray



The **ProSpray** cleaning and sanitation system automatically dilutes and dispenses concentrated cleaning products as a foam or spray.

The spray system is easily and quickly converted into a foam system with the quick coupling foam wand.

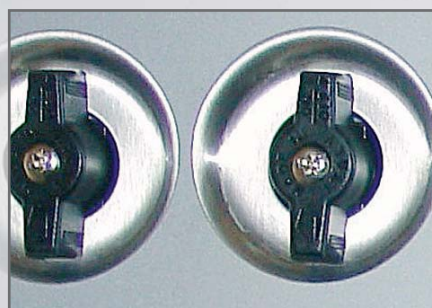
The chemical feed rate is set by metering tips pressed into the barb on the side of the **ProSpray**.

Brass fittings for hot water resistance, polypropylene injectors for chemical resistance, rugged stainless steel casing for secure mounting and durability. **Will dispense 1 or 2 chemical products or a clear water rinse.**

These features make the **ProSpray** suitable for **cleaning throughout the food processing, dairy, transportation, industrial and agricultural industries.**

It can be used:

in supermarket meat rooms, seafood shops, butcher shops, automotive care areas, shower rooms; in short: **anywhere spray/foam cleaning or sanitation is needed.**



- Ball valve operation
- No need to hold or lock a button

- Smooth and ergonomic surface, with no sharp edges
- Attractive user-friendly design

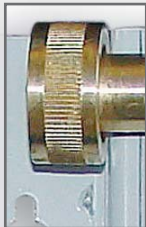
Main accessories



GUN BV
(Ball Valve)



Foam Wand



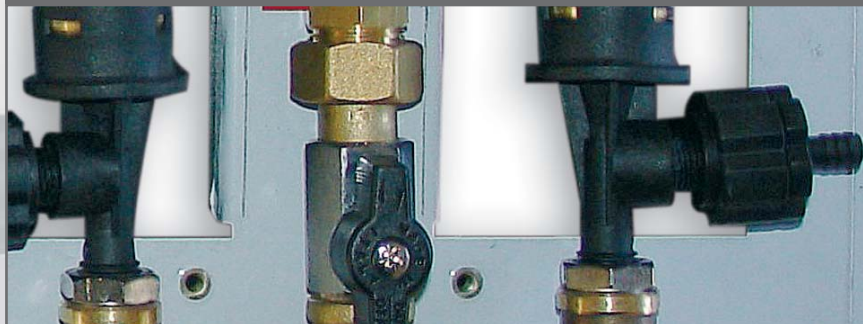
- Connection direct to the water source
- No electric power or compressed air needed

- Rugged stainless steel enclosure
- Strong, long lasting and easy to clean
- Installs easily with 2 or 4 screws



15 colour coded dilution tips

- 1 or 2 product model available
- Ability to dispense 1 or 2 products or a clear water rinse



Main features

- Strong, long lasting and easy to clean rugged stainless steel enclosure
- Smooth and ergonomic surface, with no sharp edges
- Connection direct to the water source, no electric power or compressed air needed
- Space saving
- Quick and easy installation: no special tools required
- Single or multiple chemical use
- **2 GPM Flow rate**
- **15 different mixing ratios** can be easily chosen, making the dosing accurate and effective
- Ball valve operation, no need to hold or lock a button
- Fill tube designed to minimize excess foam

For all proportioning applications, SEKO provides the following:

- Possibility to dose 2 products individually or simultaneously (2 product model)

PROSPRAY accessories available:

- Wire rack for chemical containers
- Drip Tray to avoid spillage
- Ultra lean Tip

Hose
(25 or 50 ft.)



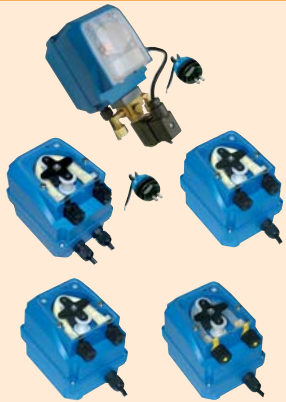
GUN T
(Trigger)

Our complete range

for all your dosing and cleaning demands

Warewash Systems

Ware Basic



Ware Plus



TDS



Laundry Systems

OPL Advantage



OPL Basic



SEKO DOSING SYSTEMS CORP.

Tel.: (215) 945 0125

Fax: (215) 945 0937

Toll Free: (866) 651 4323

ISSA MEMBER[®]
The Experts
on Cleaning and Maintenance

Web site: www.sekousa.com

Email: sales@sekousa.com



SEKO Asia Pacific **SINGAPORE** • SEKO China **CHINA** • SEKO do Brasil **BRAZIL** • SEKO Dosing Systems **USA** • SEKO Southern Africa **SOUTH AFRICA**
SEKO Deutschland **GERMANY** • SEKO France **FRANCE** • SEKO Iberica **SPAIN** • SEKO Italia **ITALY** • OOO SEKO **RUSSIA** • SEKO UK **UNITED KINGDOM**